



## SOPHISTICATED 4.3" SMART TOUCH DISPLAY ON STM32 BASIS

Smartphones have shown how it's done. Now small, sophisticated touch displays are making a major splash on the market. We can already see them in action in a wide range of fields – in mechanical engineering as distributed operating and display units, in building technology for communication with lighting, ventilation, heating and shading systems, in medical technology as high-value, easy-to-clean operating consoles. The fields of application are virtually unlimited, and costs have come down drastically in recent years.

Equip your sophisticated, high-value device with our compact, inexpensive 4.3" touch display! It has outstanding optical properties with a wide angle of view and can be installed in landscape or portrait format. Suited for installation in a simple 72 mm flush-mounted box, it is ultra-compact yet equipped with everything you need from a touch display for building technology. The optional anodized aluminum casing with ambient illumination completes the overall high-grade impression.

The user interface can be set up quickly and efficiently via usability features and proven design tools.

### FEATURES

- ▶ capacitive touch
- ▶ front panel in stainless steel or aluminum
- ▶ no operating system required
- ▶ simple wall installation
- ▶ low power consumption
- ▶ rapid boot-up

### CLIENT BENEFITS

- ▶ sophisticated design
- ▶ long-term availability
- ▶ custom front panel and casing design possible
- ▶ flexible configuration options
- ▶ compact construction
- ▶ excellent value for money

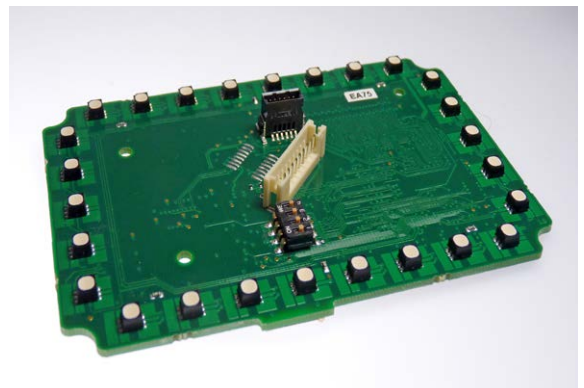
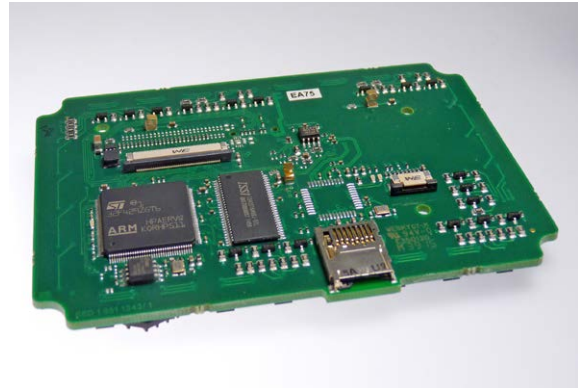
### APPLICATIONS

- ▶ mechanical engineering
- ▶ building technology
- ▶ medical technology
- ▶ vehicle technology
- ▶ device technology
- ▶ communications



# TECHNICAL DATA

| PROCESSOR                                 |  |
|---|--|
| CPU                                       | STM32F429 (Cortex M4) 32bit                            |
| Memory                                    | 1MB FLASH, 256KB RAM                                   |
| EXTERNAL MEMORY                           |  |
| SDRAM                                     | 8 MB   |
| NOR-Flash                                 | 4 MB   |
| SD Card                                   | 1x micro-SD  |
| COMMUNICATION (CHOICE OF ETHERNET OR CAN) |  |
| Standard                                  | 1x 10/100Base-T  |
| Alternative                               | 1x CAN 2.0B  |
| DISPLAY                                   |  |
| Size                                      | 4,3"   |
| Resolution                                | 480 x 272 RGB  |
| View Angle Multi-view                     | left/right: 160°<br>top/bottom: 160° (85°/75°)         |
|   | Freely selectable mounting position, rotatable display |
| Brightness                                | Typ. 700 cd/m <sup>2</sup>                             |
| LED lifespan                              | 40.000 h   |
| TOUCH                                     |  |
| Touch                                     | capacitive   |
| AMBIENT ILLUMINATION                      |  |
| LEDs                                      | 26x RGB  |
| Colors                                    | 16.7 million configurable                              |
| Brightness                                | dimnable   |
| OTHER                                     |  |
| Power supply                              | 24VDC  |
| Mounting type                             | Flush-mount installation                               |
| Power consumption                         | < 1,7 W (optionally with ambient illumination)         |
| Temperature range                         | 0°C to +70°C   |
| Mechanical dimensions                     | 122 x 86 mm  |



## YOUR CONTACT

Kontron Electronics GmbH  
Kantstraße 10, 72663 Großbettlingen, Germany

Phone: +49 7022 4057-0  
Fax: +49 7022 4057-22  
E-Mail: [info@kontron-electronics.de](mailto:info@kontron-electronics.de)  
Web: [www.kontron-electronics.de](http://www.kontron-electronics.de)

We point out that all used brand names refer to the general brand, trademark or patent protection of the respective company or facility.

## GLOBAL HEADQUARTERS

Kontron S&T AG  
Lise-Meitner-Str. 3-5, 86156 Augsburg, Germany

Phone: +49 821 4086 0  
Fax: +49 821 4086 111  
E-Mail: [info@kontron.com](mailto:info@kontron.com)  
Web: [www.kontron.com](http://www.kontron.com)